



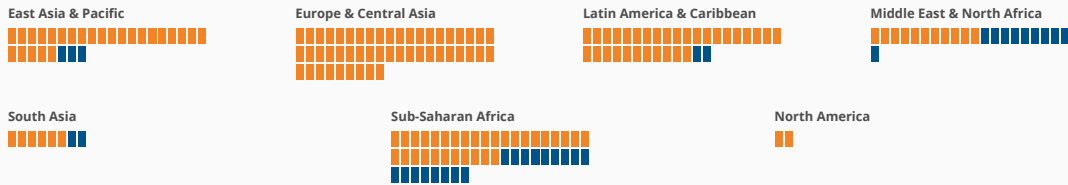
Norms and Decision-making

Social norms continue to constrain women's capacity to effectively participate in society. Addressing these attitudes about women's roles at all ages and societal levels is essential for moving towards a more gender equal redistribution of roles and inclusion of more women in decision-making processes.

A woman can apply for a passport in the same way as a man

Yes No

Hover over each square to see the data for specific economies



Source: World Bank: Women, Business and the Law. <https://wbl.worldbank.org/>

Women's participation in decision making (% of women ages 15-49)

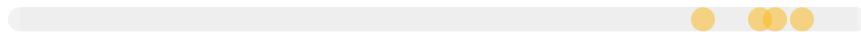
Making their own informed decisions regarding sexual relations, contraceptive use and reproductive health care



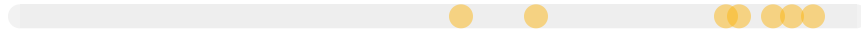
Decision of visits to family, relatives, friends



Decision of what food to cook daily



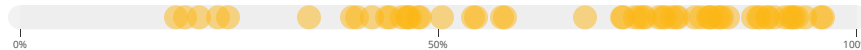
Daily purchase decisions



Major household purchase decisions



Own health care decisions

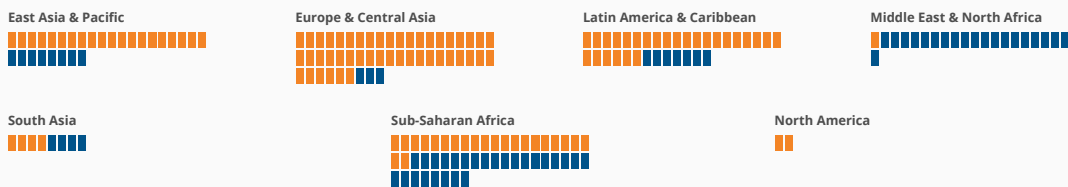


Source: Demographic and Health Surveys compiled by United Nations Population Fund

A woman has the same rights to remarry as a man

Yes No

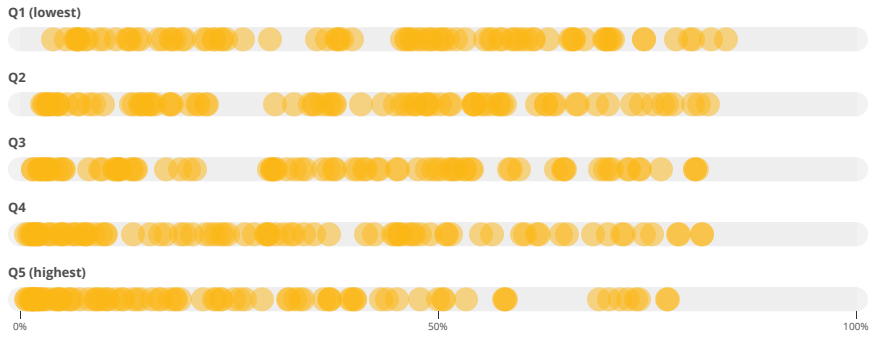
Hover over each square to see the data for specific economies



Source: World Bank: Women, Business and the Law. <https://wbl.worldbank.org/>

Women who believe a husband is justified in beating his wife by wealth quintile

% of women ages 15-49



Source: Demographic and Health Surveys (DHS), Multiple Indicator Cluster Surveys (MICS), and other surveys